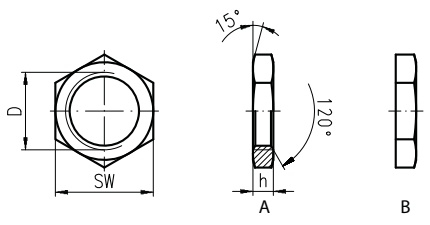


Accessories

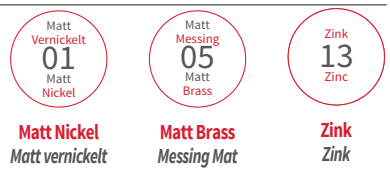
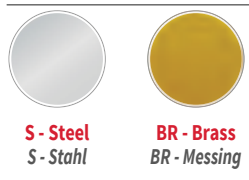
Zubehör





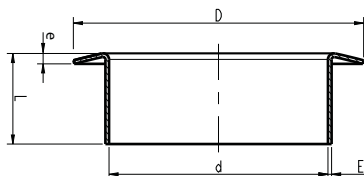
| D | SW | h | TYPE | MATERIAL | FINISH | ITEM CODE |
|----------|----|------|------|----------|---------|---------------|
| D | SW | h | TYP | MATERIAL | FÄRBUNG | ARTIKELNUMMER |
| M08x1 | 12 | 3 | B | BR | 01 | 201305 |
| M08x1 | 12 | 3 | B | S | 13 | 201304 |
| M10x1 | 14 | 3 | A | BR | 01 | 201307 |
| M10x1 | 14 | 3 | B | S | 13 | 201306 |
| M10x1 | 14 | 6,5 | B | S | 13 | 510210 |
| M14x0,75 | 17 | 4 | A | BR | 01 | 201308 |
| M14x0,75 | 17 | 3 | A | BR | 05 | 247705 |
| M16x0,75 | 19 | 3,5 | A | BR | 01 | 201309 |
| M19x1 | 22 | 8 | A | BR | 05 | 246037 |
| M19x1 | 24 | 3 | A | BR | 01 | 201311 |
| M19x1 | 24 | 5 | A | BR | 01 | 201313 |
| M20x1 | 24 | 4 | A | BR | 05 | 201314 |
| M21x1 | 24 | 4 | A | BR | 01 | 201315 |
| M21x1 | 24 | 5 | A | BR | 01 | 235752 |
| M21x1 | 24 | 8 | A | BR | 05 | 248633 |
| M21x1,5 | 25 | 5 | A | BR | 05 | 514579 |
| M22x1 | 24 | 4 | A | BR | 01 | 201316 |
| M22x1 | 27 | 5 | A | BR | 01 | 510211 |
| M23x1 | 27 | 4 | A | BR | 01 | 201318 |
| M24x1 | 27 | 4 | A | BR | 05 | 201319 |
| M24x1 | 27 | 2,85 | B | BR | 01 | 228347 |
| M25x1 | 30 | 4 | B | BR | 01 | 513910 |
| M26x1 | 30 | 4 | A | BR | 01 | 201320 |
| M30x1 | 35 | 7 | A | BR | 05 | 247485 |

Dimension in mm unless otherwise stated - Alle Maße in mm, sofern nicht anders angegeben



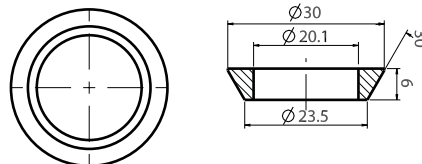
Accessories - Rosette

Zubehör - Rosetten



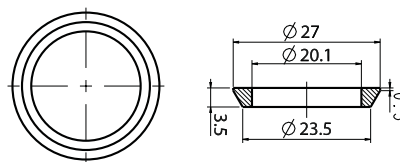
| D | d | e | L | E | MATERIAL | FINISH | ITEM CODE |
|------|------|-----|-----|-----|----------|---------|---------------|
| D | d | e | L | E | MATERIAL | FÄRBUNG | ARTIKELNUMMER |
| 22,2 | 16,6 | 0,8 | 7,5 | 0,3 | BR | 202 | 167112007 |
| 22,2 | 16,6 | 0,8 | 7,5 | 0,3 | BR | 13 | 167112013 |
| 22,2 | 16,6 | 0,8 | 7,5 | 0,3 | BR | 17 | 167112134 |
| 24 | 19 | 0,8 | 7,5 | 0,3 | BR | 01 | 167108005 |
| 24 | 19 | 0,8 | 7,5 | 0,3 | BR | 202 | 167108807 |
| 24 | 19 | 0,8 | 7,5 | 0,3 | BR | 04 | 167108808 |
| 24 | 18,1 | 0,9 | 7,5 | 0,3 | BR | 202 | 166043007 |
| 24 | 18,1 | 0,9 | 7,5 | 0,3 | BR | 17 | 166043033 |
| 29 | 23 | 1,2 | 6,3 | 0,5 | BR | 01 | 167120007 |
| 29 | 23 | 1,2 | 6,3 | 0,5 | BR | 03 | 167120008 |
| 29 | 23 | 1,2 | 6,3 | 0,5 | BR | 17 | 167120033 |

Dimension in mm unless otherwise stated - Alle Maße in mm, sofern nicht anders angegeben



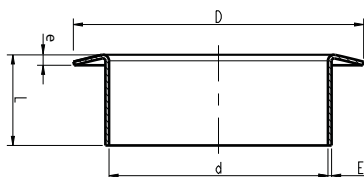
| D | d | e | L | E | MATERIAL | FINISH | ITEM CODE |
|----|------|-----|---|---|----------|---------|---------------|
| D | d | e | L | E | MATERIAL | FÄRBUNG | ARTIKELNUMMER |
| 27 | 20,1 | 2,5 | - | - | ZM | 04 | 166005008 |

Dimension in mm unless otherwise stated - Alle Maße in mm, sofern nicht anders angegeben



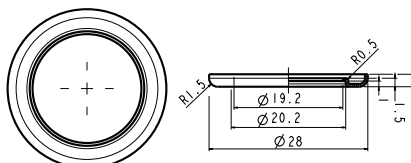
| D | d | e | L | E | MATERIAL | FINISH | ITEM CODE |
|----|------|---|---|---|----------|---------|---------------|
| D | d | e | L | E | MATERIAL | FÄRBUNG | ARTIKELNUMMER |
| 30 | 20,1 | 6 | - | - | ZM | 04 | 166003008 |

Dimension in mm unless otherwise stated - Alle Maße in mm, sofern nicht anders angegeben



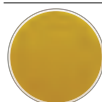
| D | d | e | L | E | MATERIAL | FINISH | ITEM CODE |
|------|------|-----|-----|-----|----------|---------|---------------|
| D | d | e | L | E | MATERIAL | FÄRBUNG | ARTIKELNUMMER |
| 22,5 | 16,6 | 1,5 | 7,5 | 0,3 | BR | 01 | 201186 |
| 24 | 18,1 | 1,5 | 7,5 | 0,3 | BR | 01 | 201187 |
| 25 | 19,1 | 1,5 | 7,5 | 0,3 | BR | 01 | 201188 |
| 28 | 22,1 | 1,5 | 7,5 | 0,3 | BR | 01 | 201191 |
| 29 | 23,1 | 1,5 | 7,5 | 0,3 | BR | 01 | 201192 |
| 35 | 29,1 | 1,5 | 7,5 | 0,3 | BR | 01 | 201194 |

Dimension in mm unless otherwise stated - Alle Maße in mm, sofern nicht anders angegeben



| D | d | e | L | E | MATERIAL | FINISH | ITEM CODE |
|----|------|-----|---|---|----------|---------|---------------|
| D | d | e | L | E | MATERIAL | FÄRBUNG | ARTIKELNUMMER |
| 28 | 19,2 | 2,2 | - | - | BR | 04 | 166041008 |

Dimension in mm unless otherwise stated - Alle Maße in mm, sofern nicht anders angegeben



BR - Brass
BR - Messing



ZM - Zamak
ZM - Zamak



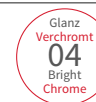
01
Matt Vernickelt
Matt Nickel



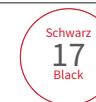
202
Glanz Vernickelt
Glanz vernickelt



03
Matt Verchromt
Matt verchromt



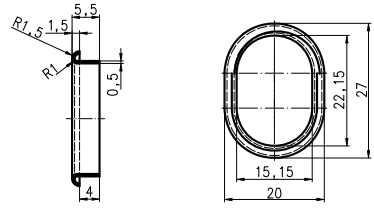
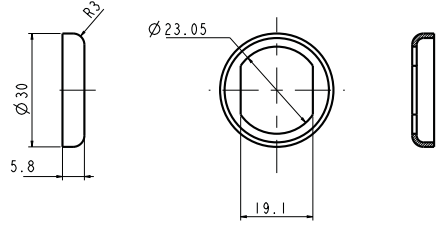
04
Glanz Verchromt
Glanz verchromt



17
Schwarz
Schwarz



25
Gold
Gold

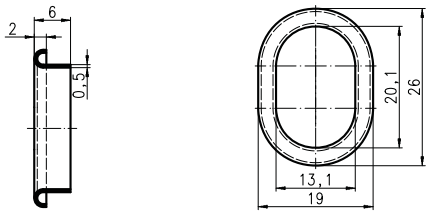
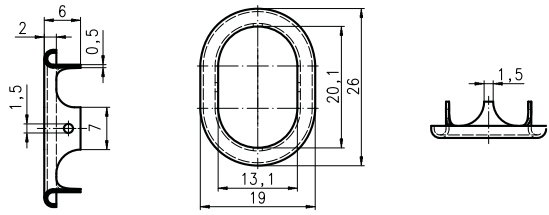


| D | d | e | L | E | MATERIAL | FINISH | ITEM CODE |
|----|-----------|-----|-----|-----|----------|---------|---------------|
| D | d | e | L | E | MATERIAL | FÄRBUNG | ARTIKELNUMMER |
| 30 | 23 x 19,1 | 5,8 | 5,8 | 1,2 | BR | 03 | 166013 |

Dimension in mm unless otherwise stated - Alle Maße in mm, sofern nicht anders angegeben

| D | d | e | L | E | MATERIAL | FINISH | ITEM CODE |
|-------|-------------|-----|-----|-----|----------|---------|---------------|
| D | d | e | L | E | MATERIAL | FÄRBUNG | ARTIKELNUMMER |
| 27x20 | 22,15x15,15 | 1,5 | 5,5 | 0,5 | BR | 01 | 201197 |

Dimension in mm unless otherwise stated - Alle Maße in mm, sofern nicht anders angegeben



| D | d | e | L | E | MATERIAL | FINISH | ITEM CODE |
|-------|-----------|---|---|-----|----------|---------|---------------|
| D | d | e | L | E | MATERIAL | FÄRBUNG | ARTIKELNUMMER |
| 26x19 | 20,1x13,1 | 2 | 6 | 0,5 | BR | 01 | 201201 |

Dimension in mm unless otherwise stated - Alle Maße in mm, sofern nicht anders angegeben

| D | d | e | L | E | MATERIAL | FINISH | ITEM CODE |
|-------|-----------|---|---|-----|----------|---------|---------------|
| D | d | e | L | E | MATERIAL | FÄRBUNG | ARTIKELNUMMER |
| 26x19 | 20,1x13,1 | 2 | 6 | 0,5 | BR | 01 | 225355 |

Dimension in mm unless otherwise stated - Alle Maße in mm, sofern nicht anders angegeben



BR - Brass
BR - Messing



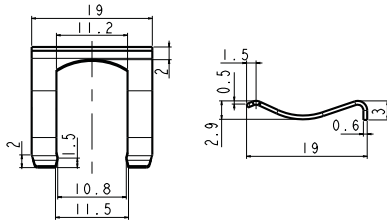
Matt Vernickelt
01
Matt Nickel
Matt Nickel
Matt vernickelt



Matt Verchromt
03
Matt Chrome
Matt Chrome
Matt verchromt

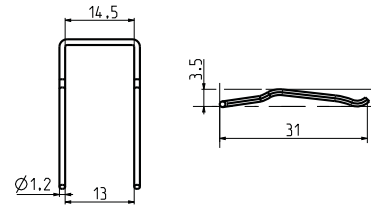
Accessories - Horseshoe Clip

Zubehör - Halteklammer



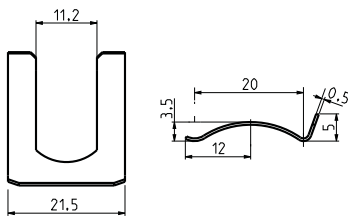
| W W | h h | e e | MATERIAL MATERIAL | FINISH FÄRBUNG | ITEM CODE ARTIKELNUMMER |
|--------|--------|--------|----------------------|-------------------|----------------------------|
| 11,2 | 3 | 0,6 | SS | - | 170040000 |

Dimension in mm unless otherwise stated - Alle Maße in mm, sofern nicht anders angegeben



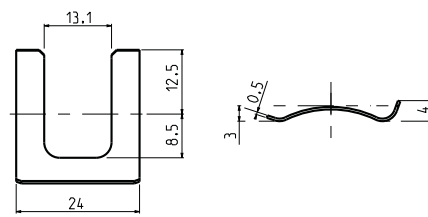
| W W | h h | e e | MATERIAL MATERIAL | FINISH FÄRBUNG | ITEM CODE ARTIKELNUMMER |
|--------|--------|--------|----------------------|-------------------|----------------------------|
| 13 | 3,5 | 1,2 | S | - | 170027000 |

Dimension in mm unless otherwise stated - Alle Maße in mm, sofern nicht anders angegeben



| W W | h h | e e | MATERIAL MATERIAL | FINISH FÄRBUNG | ITEM CODE ARTIKELNUMMER |
|--------|--------|--------|----------------------|-------------------|----------------------------|
| 11,2 | 3,5 | 0,5 | S | 13 | 170026104 |

Dimension in mm unless otherwise stated - Alle Maße in mm, sofern nicht anders angegeben



| W W | h h | e e | MATERIAL MATERIAL | FINISH FÄRBUNG | ITEM CODE ARTIKELNUMMER |
|--------|--------|--------|----------------------|-------------------|----------------------------|
| 13,1 | 3 | 0,5 | S | 13 | 170028041 |

Dimension in mm unless otherwise stated - Alle Maße in mm, sofern nicht anders angegeben



S - Steel
S - Stahl

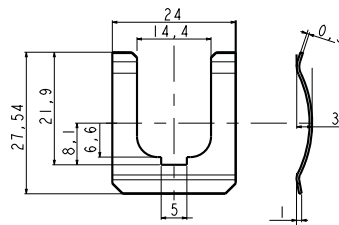
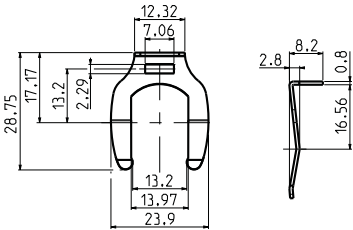


SS - Stainless Steel
SS - Edelstahl



Zink
13
Zinc

Zink
Zink

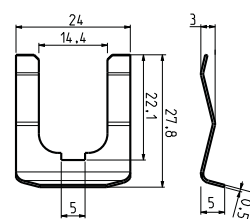
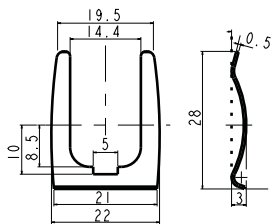


| W W | h h | e e | MATERIAL MATERIAL | FINISH FÄRBUNG | ITEM CODE ARTIKELNUMMER |
|--------|--------|--------|----------------------|-------------------|----------------------------|
| 13,97 | 2,8 | 0,8 | S | 13 | 170029001 |

Dimension in mm unless otherwise stated - Alle Maße in mm, sofern nicht anders angegeben

| W W | h h | e e | MATERIAL MATERIAL | FINISH FÄRBUNG | ITEM CODE ARTIKELNUMMER |
|--------|--------|--------|----------------------|-------------------|----------------------------|
| 14,4 | 3 | 0,5 | S | 13 | 170023041 |

Dimension in mm unless otherwise stated - Alle Maße in mm, sofern nicht anders angegeben



| W W | h h | e e | MATERIAL MATERIAL | FINISH FÄRBUNG | ITEM CODE ARTIKELNUMMER |
|--------|--------|--------|----------------------|-------------------|----------------------------|
| 14,4 | 3 | 0,5 | S | 13 | 170034022 |

Dimension in mm unless otherwise stated - Alle Maße in mm, sofern nicht anders angegeben

| W W | h h | e e | MATERIAL MATERIAL | FINISH FÄRBUNG | ITEM CODE ARTIKELNUMMER |
|--------|--------|--------|----------------------|-------------------|----------------------------|
| 14,4 | 3 | 0,5 | S | 13 | 170018041 |

Dimension in mm unless otherwise stated - Alle Maße in mm, sofern nicht anders angegeben



S - Steel
S - Stahl

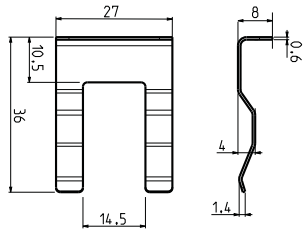


Zink
13
Zinc

Zink
Zink

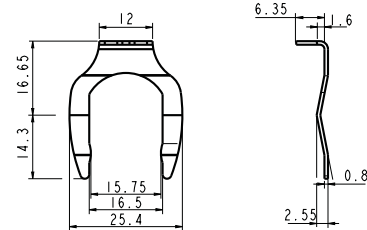
Accessories - Horseshoe Clip

Zubehör - Halteklammer



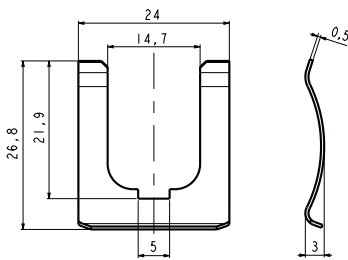
| W | h | e | MATERIAL | FINISH | ITEM CODE |
|------|---|-----|----------|---------|---------------|
| W | h | e | MATERIAL | FÄRBUNG | ARTIKELNUMMER |
| 14,5 | 4 | 0,6 | SS | - | 170021000 |

Dimension in mm unless otherwise stated - Alle Maße in mm, sofern nicht anders angegeben



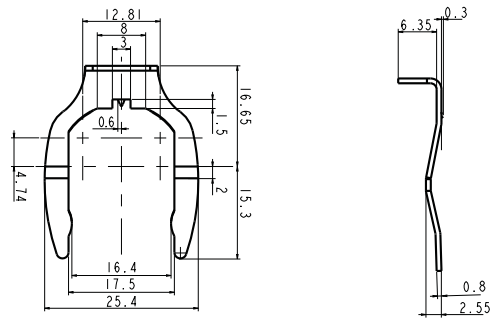
| W | h | e | MATERIAL | FINISH | ITEM CODE |
|------|------|-----|----------|---------|---------------|
| W | h | e | MATERIAL | FÄRBUNG | ARTIKELNUMMER |
| 16,5 | 2,55 | 0,8 | S | 41 | 170024022 |

Dimension in mm unless otherwise stated - Alle Maße in mm, sofern nicht anders angegeben



| W | h | e | MATERIAL | FINISH | ITEM CODE |
|------|---|-----|----------|---------|---------------|
| W | h | e | MATERIAL | FÄRBUNG | ARTIKELNUMMER |
| 14,7 | 3 | 0,5 | S | 13 | 170013022 |

Dimension in mm unless otherwise stated - Alle Maße in mm, sofern nicht anders angegeben



| W | h | e | MATERIAL | FINISH | ITEM CODE |
|------|------|-----|----------|---------|---------------|
| W | h | e | MATERIAL | FÄRBUNG | ARTIKELNUMMER |
| 17,5 | 2,55 | 0,8 | S | 13 | 170042041 |

Dimension in mm unless otherwise stated - Alle Maße in mm, sofern nicht anders angegeben



S-Steel
S-Stahl



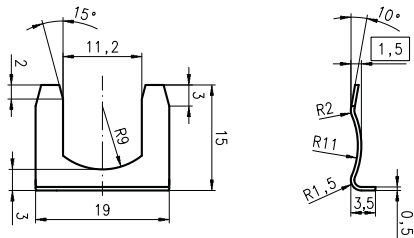
SS - Stainless Steel
SS - Edelstahl



Zink
Zink

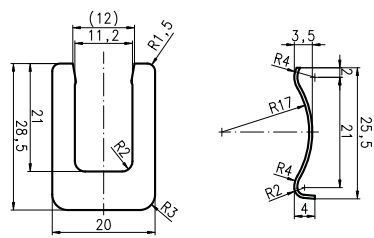


Chromated Zinc
Zink verchromt



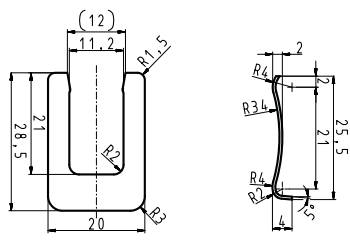
| W W | h h | e e | MATERIAL MATERIAL | FINISH FÄRBUNG | ITEM CODE ARTIKELNUMMER |
|--------|--------|--------|----------------------|-------------------|----------------------------|
| 11,2 | 1,5 | 0,5 | S | 13 | 212602 |

Dimension in mm unless otherwise stated - Alle Maße in mm, sofern nicht anders angegeben



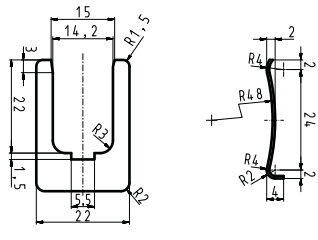
| W W | h h | e e | MATERIAL MATERIAL | FINISH FÄRBUNG | ITEM CODE ARTIKELNUMMER |
|--------|--------|--------|----------------------|-------------------|----------------------------|
| 11,2 | 3,5 | 0,5 | S | 13 | 201512 |

Dimension in mm unless otherwise stated - Alle Maße in mm, sofern nicht anders angegeben



| W W | h h | e e | MATERIAL MATERIAL | FINISH FÄRBUNG | ITEM CODE ARTIKELNUMMER |
|--------|--------|--------|----------------------|-------------------|----------------------------|
| 11,2 | 2 | 0,5 | S | 13 | 200709 |

Dimension in mm unless otherwise stated - Alle Maße in mm, sofern nicht anders angegeben



| W W | h h | e e | MATERIAL MATERIAL | FINISH FÄRBUNG | ITEM CODE ARTIKELNUMMER |
|--------|--------|--------|----------------------|-------------------|----------------------------|
| 14,2 | 2 | 0,5 | S | 13 | 207480 |

Dimension in mm unless otherwise stated - Alle Maße in mm, sofern nicht anders angegeben



S - Steel
S - Stahl

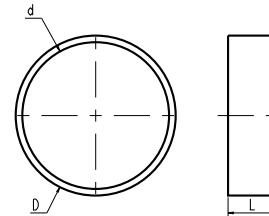
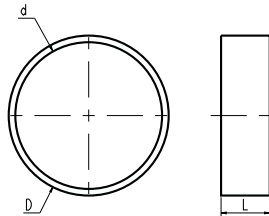


Zink
13
Zinc

Zink
Zinc

Accessories - Spacer

Zubehör - Distanzringe

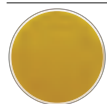


| D D | d d | L l | MATERIAL MATERIAL | FINISH FÄRBUNG | ITEM CODE ARTIKELNUMMER |
|--------|--------|--------|----------------------|-------------------|----------------------------|
| 16,8 | 13,1 | 1 | BR | 04 | 244538 |
| 15 | 13,1 | 2,5 | BR | 04 | 234210 |
| 16 | 14,2 | 3 | BR | 04 | 200611 |
| 22 | 16,2 | 1,5 | BR | 04 | 200775 |
| 18 | 16,2 | 4 | BR | 04 | 200763 |
| 18 | 16,2 | 5,5 | BR | 04 | 228663 |
| 18 | 16,2 | 6 | BR | 04 | 200768 |
| 18 | 16,2 | 6,5 | BR | 04 | 225388 |
| 18 | 16,2 | 8 | BR | 04 | 200771 |
| 20 | 17,6 | 2,2 | BR | 04 | 246072 |
| 22 | 19,2 | 1,5 | BR | 04 | 200789 |
| 22 | 19,2 | 2 | BR | 04 | 200790 |
| 22 | 19,2 | 3 | BR | 04 | 200792 |
| 22 | 19,2 | 4 | BR | 04 | 200793 |
| 22 | 19,2 | 5 | BR | 04 | 200795 |
| 22 | 19,2 | 6 | BR | 04 | 200797 |
| 22 | 19,2 | 7 | BR | 04 | 236032 |
| 22 | 19,2 | 7,5 | BR | 04 | 200798 |
| 22 | 19,2 | 8 | BR | 04 | 200799 |
| 22 | 19,2 | 8,5 | BR | 04 | 200800 |
| 22 | 19,2 | 11 | BR | 04 | 228661 |
| 22,5 | 21 | 3 | BR | 04 | 206784 |
| 25 | 21,2 | 2,5 | BR | 04 | 200806 |
| 25 | 21,2 | 3 | BR | 04 | 200807 |
| 25 | 21,2 | 6 | BR | 04 | 200812 |
| 25 | 21,2 | 7 | BR | 04 | 200814 |
| 25 | 21,2 | 8 | BR | 04 | 200816 |
| 25 | 21,2 | 10 | BR | 04 | 200818 |
| 25 | 22,2 | 3 | BR | 04 | 200821 |
| 25 | 22,2 | 6 | BR | 04 | 200823 |
| 25 | 22,2 | 10 | BR | 04 | 200826 |
| 28 | 24,1 | 2 | BR | 04 | 228294 |
| 28 | 24,1 | 8 | BR | 04 | 207882 |
| 28 | 24,1 | 10 | BR | 04 | 207883 |
| 30 | 26,1 | 4 | BR | 04 | 209203 |
| 30 | 26,1 | 5 | BR | 04 | 209204 |
| 30 | 26,1 | 7 | BR | 04 | 515099 |

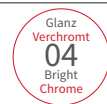
Dimension in mm unless otherwise stated - Alle Maße in mm, sofern nicht anders angegeben

| D D | d d | L l | MATERIAL MATERIAL | FINISH FÄRBUNG | ITEM CODE ARTIKELNUMMER |
|--------|--------|--------|----------------------|-------------------|----------------------------|
| 23 | 21,1 | 9 | BR | 04 | 111361008 |
| 23 | 21,1 | 5 | BR | 04 | 111369008 |
| 23 | 21,1 | 6 | BR | 04 | 111360008 |
| 23 | 21,1 | 7 | BR | 04 | 111368008 |
| 23 | 21,1 | 9,5 | BR | 04 | 111365008 |
| 23 | 21,1 | 14,5 | BR | 04 | 111356008 |

Dimension in mm unless otherwise stated - Alle Maße in mm, sofern nicht anders angegeben



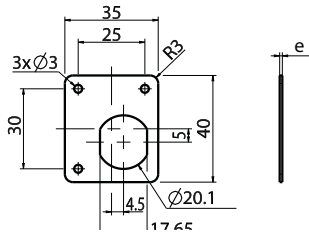
BR - Brass
BR - Messing



Bright Chrome
Glanz verchromt

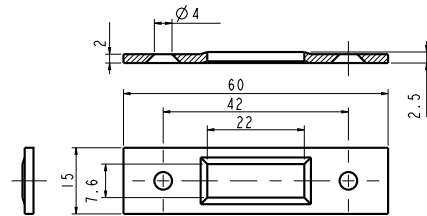
Accessories - Strike Plate

Zubehör - Halteplatte



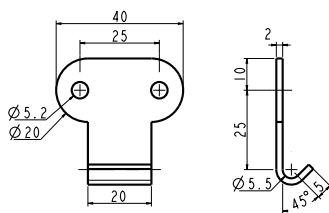
| l / | w w | e e | MATERIAL MATERIAL | FINISH FÄRBUNG | ITEM CODE ARTIKELNUMMER |
|--------|--------|--------|----------------------|-------------------|----------------------------|
| 40 | 35 | 1 | S | 202 | 224040011 |

Dimension in mm unless otherwise stated - Alle Maße in mm, sofern nicht anders angegeben



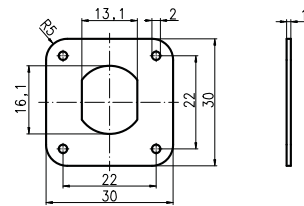
| l / | w w | e e | MATERIAL MATERIAL | FINISH FÄRBUNG | ITEM CODE ARTIKELNUMMER |
|--------|--------|--------|----------------------|-------------------|----------------------------|
| 60 | 15 | 1 | S | 202 | 224701011 |

Dimension in mm unless otherwise stated - Alle Maße in mm, sofern nicht anders angegeben



| l / | w w | e e | MATERIAL MATERIAL | FINISH FÄRBUNG | ITEM CODE ARTIKELNUMMER |
|--------|--------|--------|----------------------|-------------------|----------------------------|
| 40 | 40 | 2 | S | - | 176200021 |

Dimension in mm unless otherwise stated - Alle Maße in mm, sofern nicht anders angegeben



| l / | w w | e e | MATERIAL MATERIAL | FINISH FÄRBUNG | ITEM CODE ARTIKELNUMMER |
|--------|--------|--------|----------------------|-------------------|----------------------------|
| 30 | 30 | 1 | S | 01 | 201723 |

Dimension in mm unless otherwise stated - Alle Maße in mm, sofern nicht anders angegeben



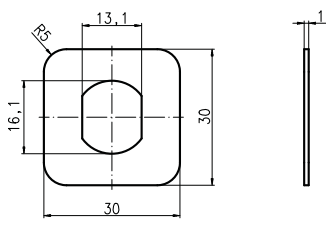
S - Steel
S - Stahl



Matt Nickel
01
Matt vernickelt

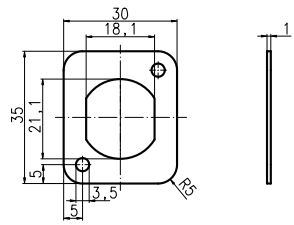


Glanz Vernickelt
202
Bright Nickel
Glanz vernickelt



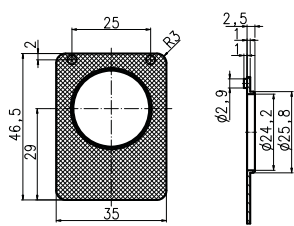
| l / | w w | e e | MATERIAL MATERIAL | FINISH FÄRBUNG | ITEM CODE ARTIKELNUMMER |
|--------|--------|--------|----------------------|-------------------|----------------------------|
| 30 | 30 | 1 | S | 01 | 207459 |

Dimension in mm unless otherwise stated - Alle Maße in mm, sofern nicht anders angegeben



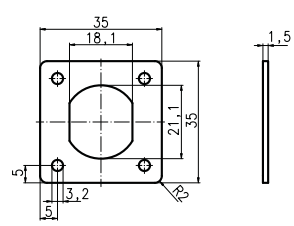
| l / | w w | e e | MATERIAL MATERIAL | FINISH FÄRBUNG | ITEM CODE ARTIKELNUMMER |
|--------|--------|--------|----------------------|-------------------|----------------------------|
| 35 | 30 | 1 | S | 01 | 229248 |

Dimension in mm unless otherwise stated - Alle Maße in mm, sofern nicht anders angegeben



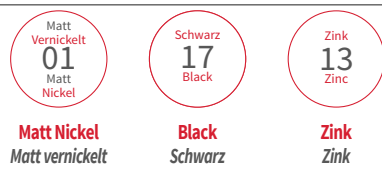
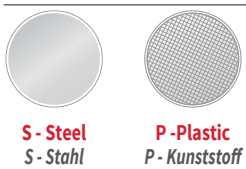
| l / | w w | e e | MATERIAL MATERIAL | FINISH FÄRBUNG | ITEM CODE ARTIKELNUMMER |
|--------|--------|--------|----------------------|-------------------|----------------------------|
| 35 | 46,5 | 1 | P | 17 | 215461 |

Dimension in mm unless otherwise stated - Alle Maße in mm, sofern nicht anders angegeben



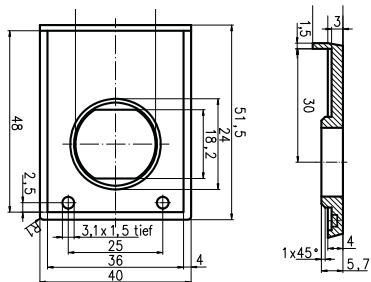
| l / | w w | e e | MATERIAL MATERIAL | FINISH FÄRBUNG | ITEM CODE ARTIKELNUMMER |
|--------|--------|--------|----------------------|-------------------|----------------------------|
| 35 | 35 | 1 | S | 25 | 217765 |

Dimension in mm unless otherwise stated - Alle Maße in mm, sofern nicht anders angegeben



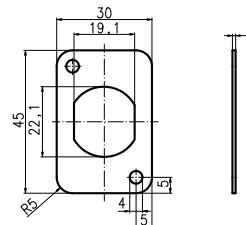
Accessories - Strike Plates

Zubehör - Halteplatte



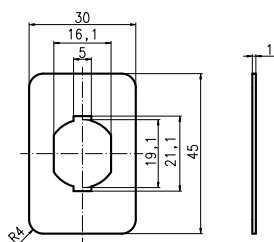
| l / | w w | e e | MATERIAL MATERIAL | FINISH FÄRBUNG | ITEM CODE ARTIKELNUMMER |
|--------|--------|--------|----------------------|-------------------|----------------------------|
| 40 | 51,5 | 1 | ZM | 01 | 215460 |
| 40 | 51,5 | 1 | ZM | 04 | 215460 |

Dimension in mm unless otherwise stated - Alle Maße in mm, sofern nicht anders angegeben



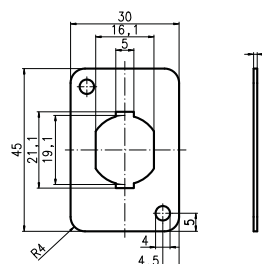
| l / | w w | e e | MATERIAL MATERIAL | FINISH FÄRBUNG | ITEM CODE ARTIKELNUMMER |
|--------|--------|--------|----------------------|-------------------|----------------------------|
| 45 | 30 | 1 | S | 01 | 210577 |

Dimension in mm unless otherwise stated - Alle Maße in mm, sofern nicht anders angegeben



| l / | w w | e e | MATERIAL MATERIAL | FINISH FÄRBUNG | ITEM CODE ARTIKELNUMMER |
|--------|--------|--------|----------------------|-------------------|----------------------------|
| 45 | 30 | 1 | S | 01 | 207458 |

Dimension in mm unless otherwise stated - Alle Maße in mm, sofern nicht anders angegeben



| l / | w w | e e | MATERIAL MATERIAL | FINISH FÄRBUNG | ITEM CODE ARTIKELNUMMER |
|--------|--------|--------|----------------------|-------------------|----------------------------|
| 45 | 30 | 1 | S | 01 | 201711 |

Dimension in mm unless otherwise stated - Alle Maße in mm, sofern nicht anders angegeben



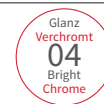
S - Steel
S - Stahl



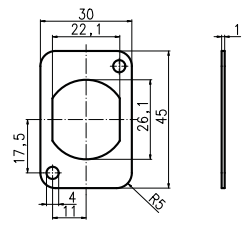
ZM - Zamak
ZM - Zamak



Matt
Vernickelt
01
Matt
Nickel



Glanz
Verchromt
04
Bright
Chrome

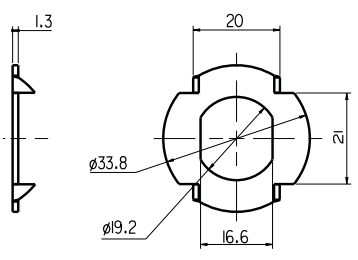


| l / | w w | e e | MATERIAL MATERIAL | FINISH FÄRBUNG | ITEM CODE ARTIKELNUMMER |
|--------|--------|--------|----------------------|-------------------|----------------------------|
| 45 | 30 | 1 | S | 01 | 205359 |

Dimension in mm unless otherwise stated - Alle Maße in mm, sofern nicht anders angegeben

Accessories - Claw washer

Zubehör - Krallenscheibe



| l / | w w | e e | MATERIAL MATERIAL | FINISH FÄRBUNG | ITEM CODE ARTIKELNUMMER |
|--------|--------|--------|----------------------|-------------------|----------------------------|
| 33,8 | 19,2 | 1,3 | S | 41 | 238427 |

Dimension in mm unless otherwise stated - Alle Maße in mm, sofern nicht anders angegeben

Claw washer for locks with punch hole 19,1x16,6
 Krallenscheibe für Zylinder mit Einbaulochung 19,1x16,6

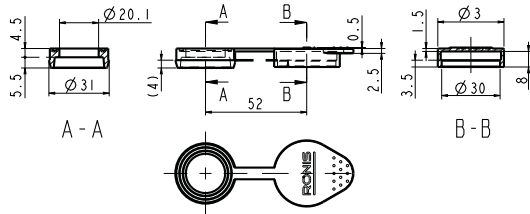


Accessories - Dust cover

Zubehör - Staubschutz



RONIS



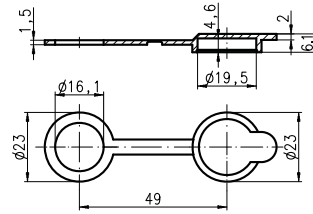
| D | d | e | MATERIAL | FINISH | ITEM CODE |
|----|------|----|----------|---------|---------------|
| D | d | e | MATERIAL | FÄRBUNG | ARTIKELNUMMER |
| 31 | 20,1 | 10 | P | 17 | 127049 |

Dimension in mm unless otherwise stated - Alle Maße in mm, sofern nicht anders angegeben

+ Dust cover for locks with punch hole 20,1 x 17,6 mm and head 30 mm Ø
 Staubschutz für Zylinder mit Einbaulochung 20,1x17,6 mm und Kopfdurchmesser Ø30mm



DOM



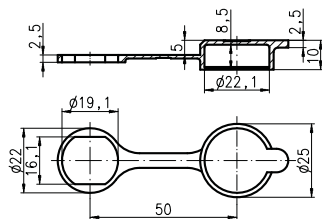
| D | d | e | MATERIAL | FINISH | ITEM CODE |
|----|------|-----|----------|---------|---------------|
| D | d | e | MATERIAL | FÄRBUNG | ARTIKELNUMMER |
| 23 | 16,1 | 1,5 | P | 17 | 235863 |

Dimension in mm unless otherwise stated - Alle Maße in mm, sofern nicht anders angegeben

+ Dust cover for locks with punch hole 16,1mm and head 20mm Ø
 Staubschutz für Zylinder mit Einbaulochung 16,1mm und Kopfdurchmesser Ø20mm



DOM



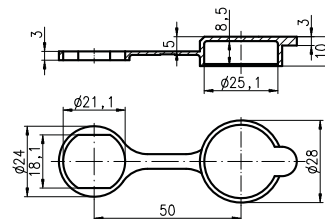
| D | d | e | MATERIAL | FINISH | ITEM CODE |
|----|------|-----|----------|---------|---------------|
| D | d | e | MATERIAL | FÄRBUNG | ARTIKELNUMMER |
| 22 | 19,1 | 2,5 | P | 17 | 503880 |

Dimension in mm unless otherwise stated - Alle Maße in mm, sofern nicht anders angegeben

+ Dust cover for locks with punch hole 16,1x19,1mm and head 22mm Ø
 Staubschutz für Zylinder mit Einbaulochung 16,1x19,1mm und Kopfdurchmesser Ø22mm



DOM



| D | d | e | MATERIAL | FINISH | ITEM CODE |
|----|------|---|----------|---------|---------------|
| D | d | e | MATERIAL | FÄRBUNG | ARTIKELNUMMER |
| 24 | 21,1 | 3 | P | 17 | 214852 |

Dimension in mm unless otherwise stated - Alle Maße in mm, sofern nicht anders angegeben

+ Dust cover for locks with punch hole 18,1x21,1mm and head 25mm Ø
 Staubschutz für Zylinder mit Einbaulochung 18,1x21,1mm und Kopfdurchmesser Ø25mm



P - Plastic
 P - Kunststoff



Schwarz
 17
 Black

Black
 Schwarz